

TDM Discovery Application Note (#20050614)

Product:

- FG-PAM-SAN-Eth
- FG-PAM-SRL-Eth
- FG-PAM-SAN-Eth-4W
- FG-PAM-SRL-Eth-4W

Firmware:

- V.1.9i and above

Application:



Figure 1: Point-to-point Ethernet with transparent bridging (IEEE 802.3d)

Description:

If no remote management (Telnet) is required to access each TDM Discovery modem and subrack module, there is no need to assign an individual IP address to each device. By entering IP address 0.0.0.0 under menu item 4, 5, 6, and 7 (refer to figure 2), the remote management functionality is disabled and the problem of duplicated IP addresses can be avoided, while the device still provides basic operation. The main advantage is significant time saving when configuring and administrating IP addresses for a large number of devices.

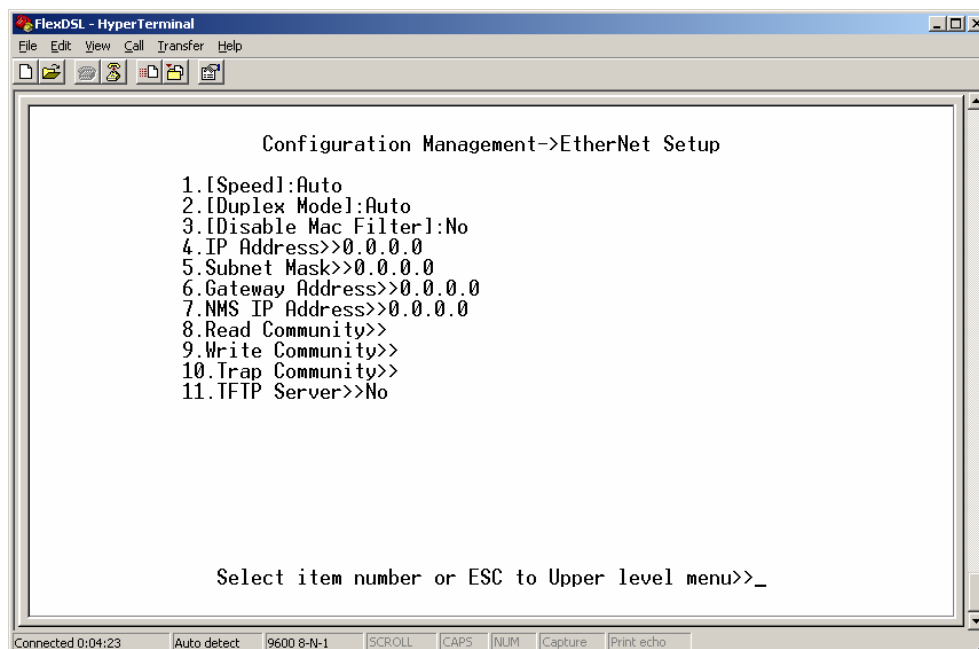


Figure 2: TDM Discovery Ethernet Setup Menu

If you have any question please do not hesitate to call us on +41 1 741 5290 or by sending an e-mail to info@flexdsl.ch.